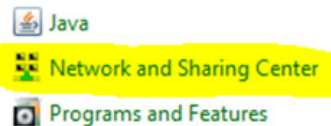


# How to change a computers IP address for hardwiring into the DE-4000

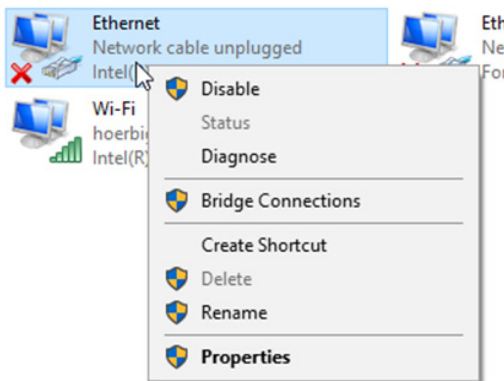
1. Open the computers “control panel”
2. Open “network and sharing center”



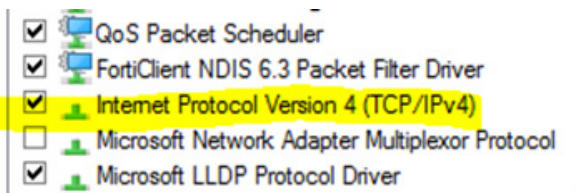
3. Click on “change adapter settings”



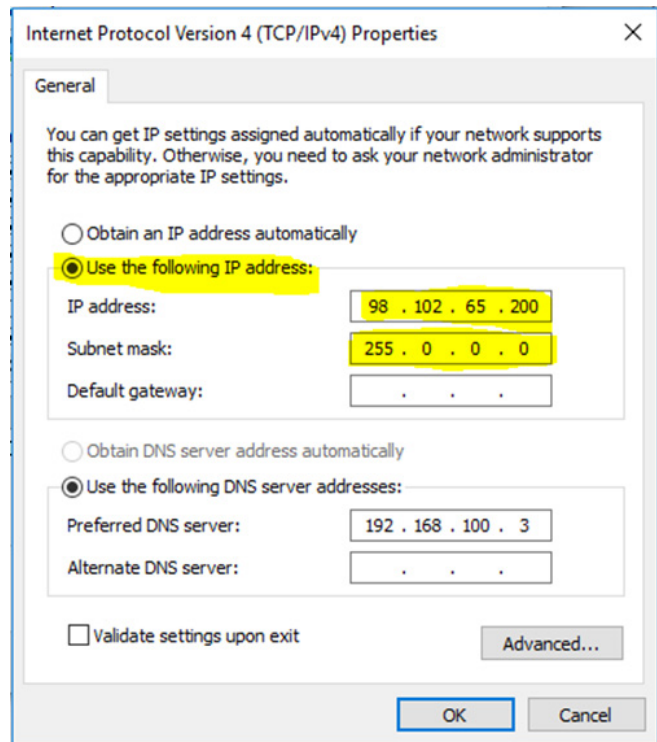
4. Right click on “Ethernet”, select “properties”



5. Double click “internet protocol version 4 (TCP/IPv4)”



6. Use the following settings



7. After updating the settings, click “OK”

This will change the IP address so that you can connect to a DE-4000 via Ethernet cable.

The default IP address for the DE-4000 is 98.102.65.174