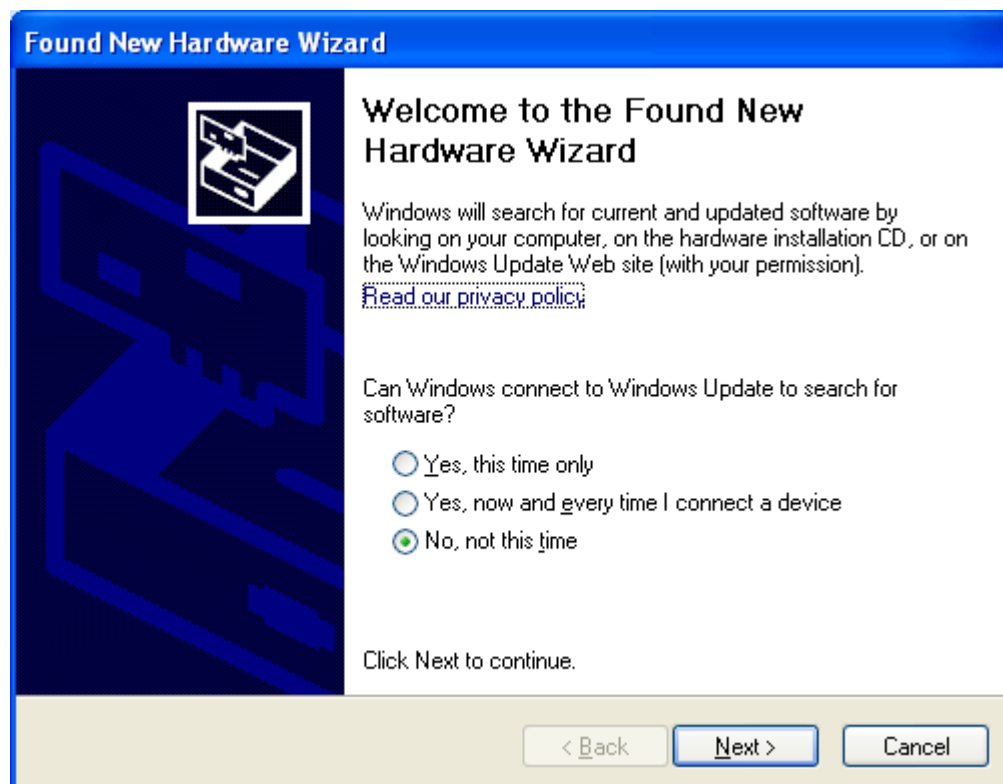


Windows 2000 & Windows XP SP2 & Windows VISTA
USB Virtual Com Port
For use with DE-3xxx Terminal Programs

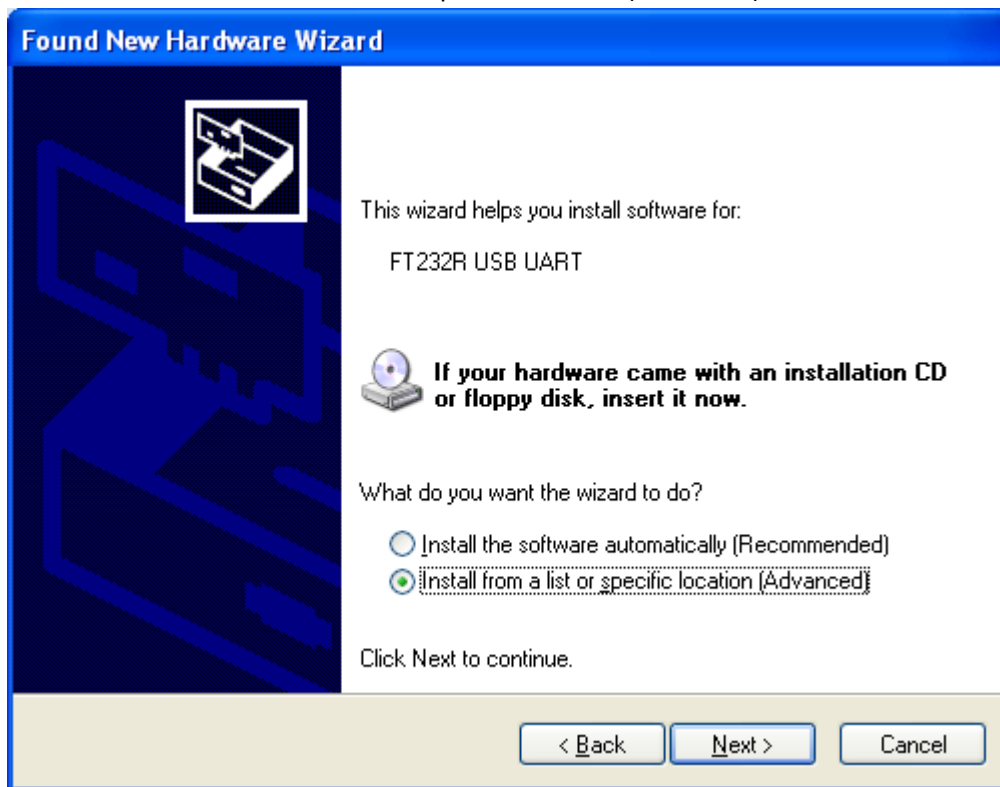
1. Install the DE-3xxx terminal program. (the DE programs will use this USB port and the port only needs to be configured once)

Product directory after installing our Terminal Program is C:\Program Files\Altronic DE-3xxx Terminal Program.

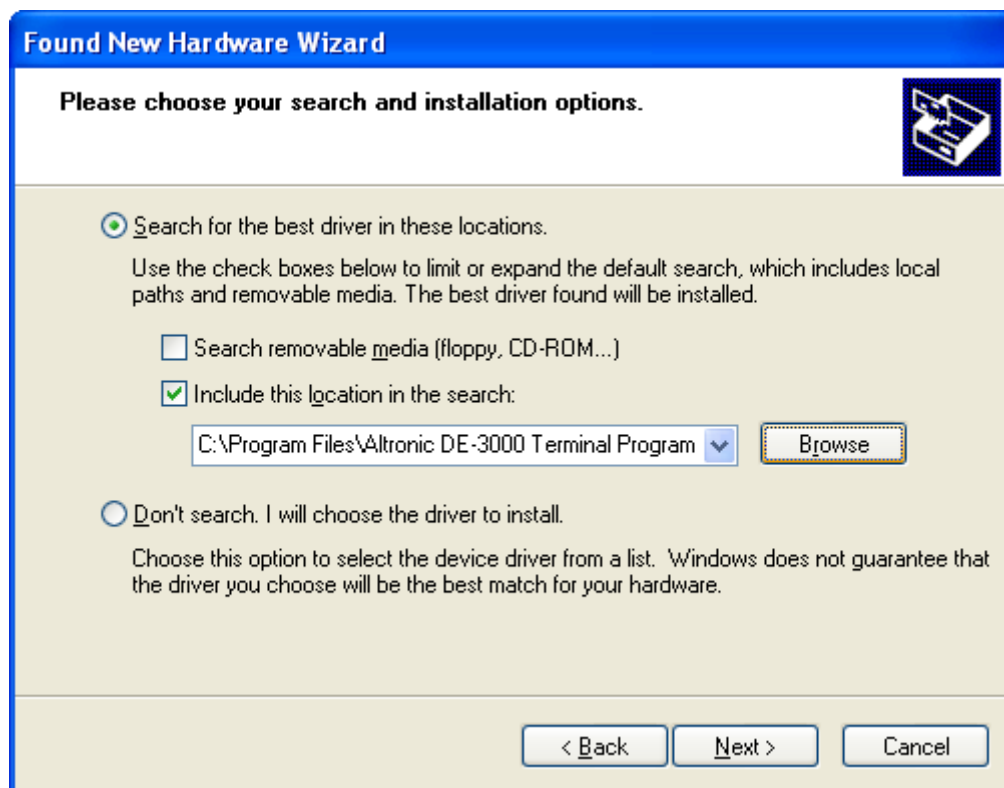
2. Power up the DE-3xxx unit and connect the unit via the USB receptacle on the back of the Display unit with a spare USB port on your computer.
3. Windows Found New Hardware Wizard will launch as shown below. For Windows XP SP2 configuration, the screen below is shown. Select "No, not at this time" from the options available and then click "Next" to Proceed with the installation.



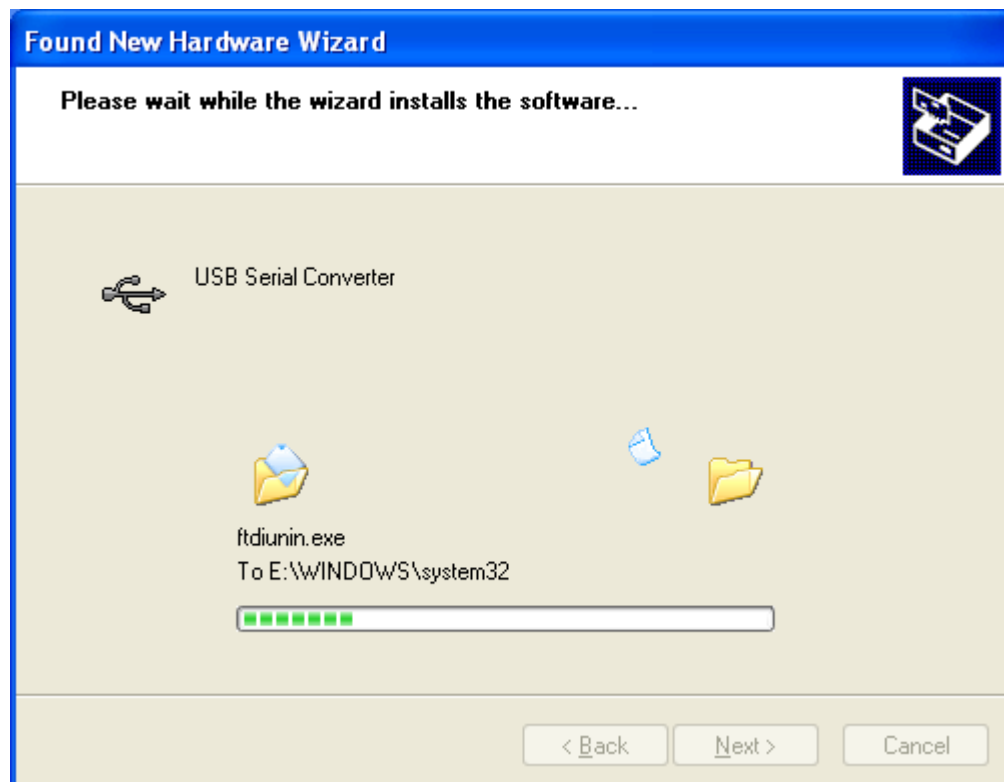
4. Windows Found New Hardware Wizard found FT232R USB UART device, the screen below is shown. Select "Install from a list or specific location (Advanced)" and then click "Next".



5. Select "Search for the best driver in these locations" and enter the file path in the combo-box "C:\Program Files\Altronic DE-3000 Terminal Program\USBDRIVER_XP2KVISTA" or browse to it by clicking the browse button. Once the file path has been entered in the box, click next to proceed



6. The following screen will be displayed as Windows XP copies the required driver files.



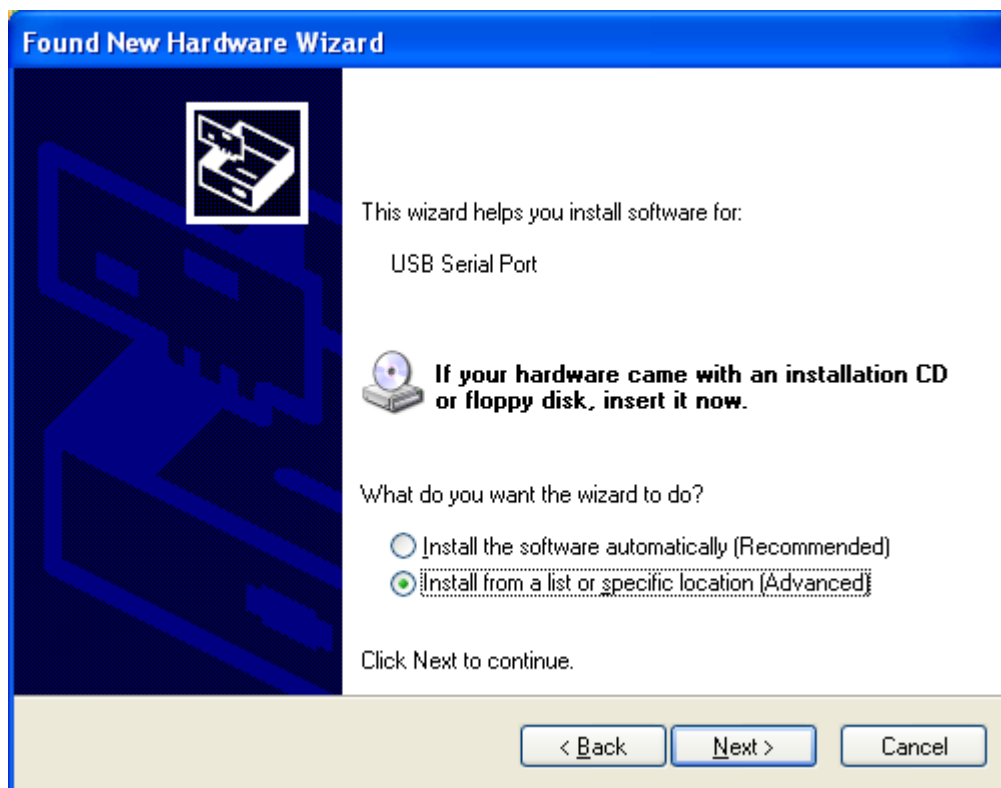
7. Windows should then display a message indicating that the installation was successful. Click "Finish" to complete the installation for the first port of the device.



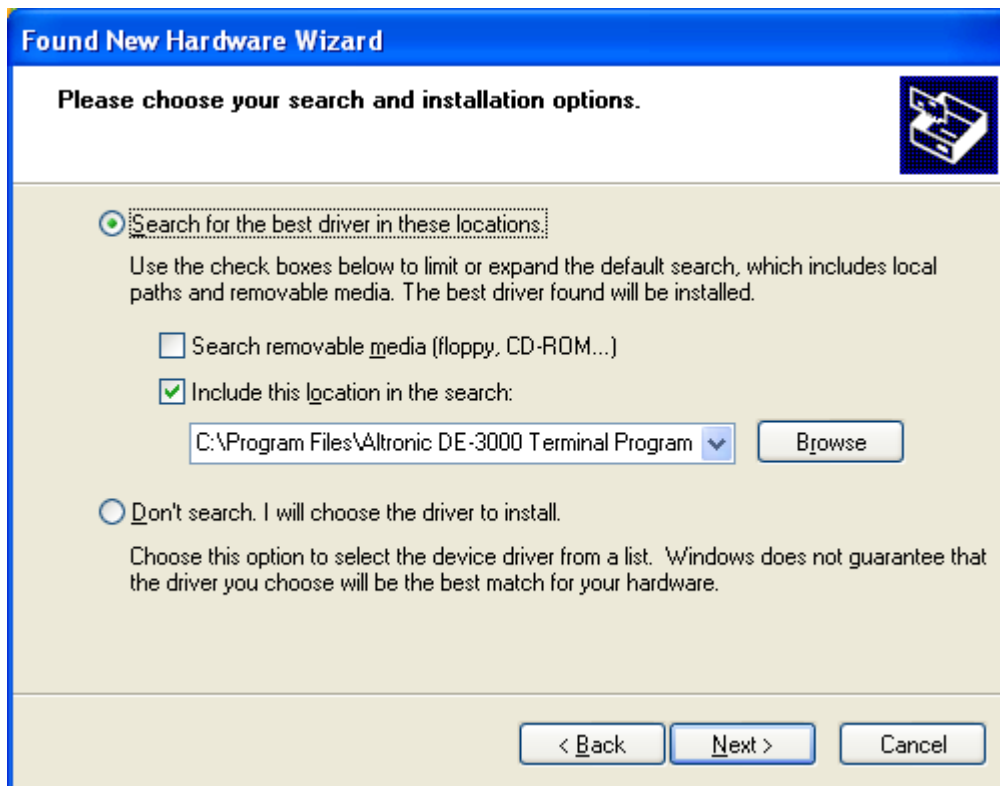
8. The Found New Hardware Wizard will launch automatically to install the Com port emulation drivers. As below, select "No, not this time" From the options and click "Next" to proceed with the installation.



9. Select "Instll from a list or specific location (Advanced)" as shown below and then click "Next".



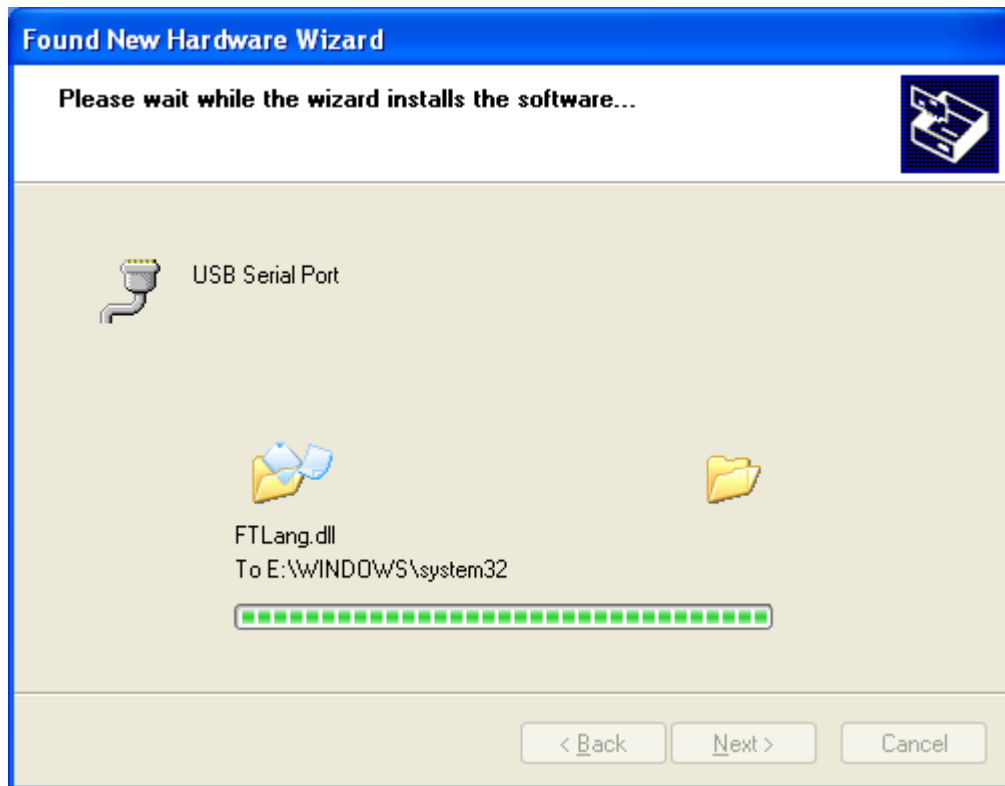
10. Select "Search for the best driver in these locations" and enter the file path in the combo-box "C:\Program Files\Altronic DE-3000 Terminal Program\USBDRIVER_XP2KVISTA" or browse to it by clicking the browse button. Once the file path has been entered in the box, click next to proceed



11. If Windows XP is configured to warn when unsigned (non-WHQL certified) drivers are about to be installed, the following screen will be displayed unless installing a Microsoft WHQL certified driver. Click on "Continue Anyway" to continue with the installation. If Windows XP is configured to ignore file signature warnings, no message will appear.

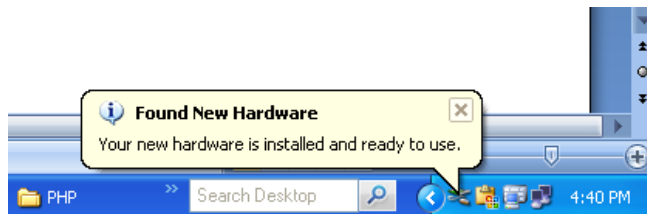
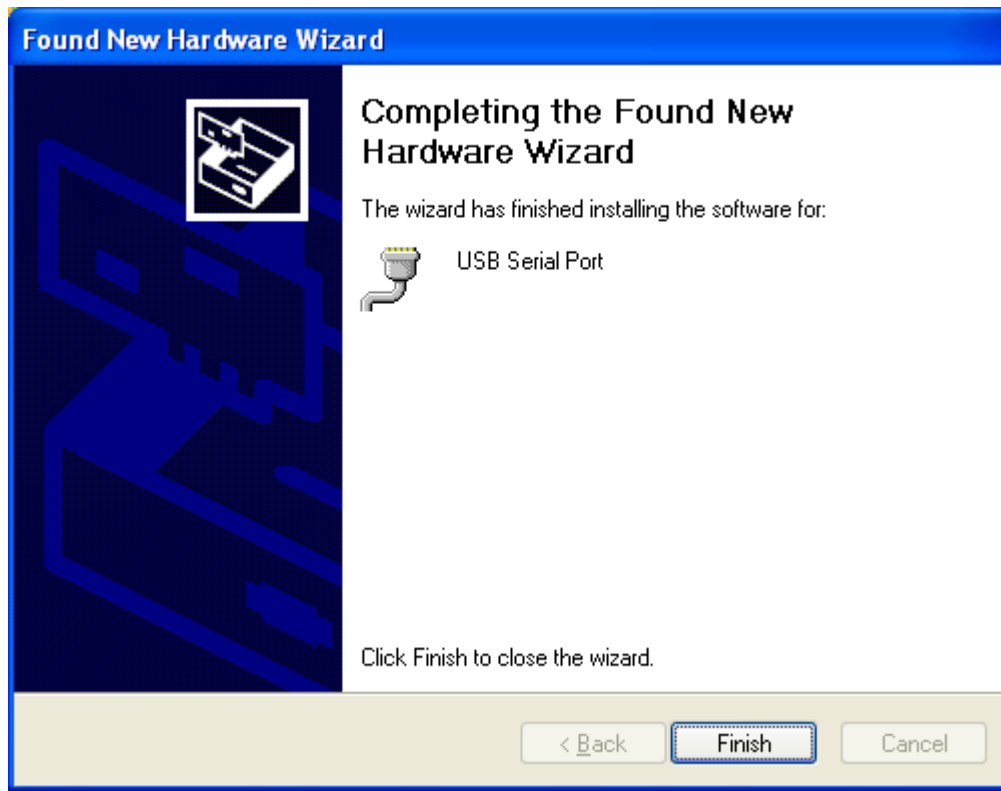


12. The following screen will be displayed as Windows XP copies the required driver files.



13. Windows should then display a message indicating that the installation was successful. Click “Finish” to complete the installation. No need to restart you computer to initialize the new USB

Virtual Com Port configurations.



14. Power up the DE-3xxx unit and connect the Unit to your computer. Open the Device Manager (Start Menu -> Control Panel -> System -> Hardware –Device Manager)

