

GTI SERVICE NOTE

GTI 111

JUNE, 2013

Purpose:

This bulletin is to provide instruction on how to wire and install a fast blow fuse in the GPN2015V panel. This fuse installation is necessary in order to prevent damage to the solid state relays should a short circuit occur in the system or wiring downstream of the fuse.

Units Affected:

This upgrade is only required on GPN2015V panels built prior to s/n 1208 if they will be powering the StepCON manifold assembly. All GPN2015V panels built after s/n 1208 incorporate this change direct from the Altronic factory.

Materials needed:

- Small flat screwdriver (1/8 inch blade (3.2mm))
- Medium Flat Screwdriver
- Wire strippers (optional)
- Update kit P/N 620022 (provided free of charge by Altronic) containing the following items:
 - o Fuse 5 Amp Fast Blow (P/N 611129) (4)
 - o Fuse Holder (P/N 615033) (1)
 - o Orange wire (19 inches) (1)
 - o Orange wire (3 inches) (1)
 - o Tie wraps (P/N 610145) (8)

Procedure:

1. Reference wiring diagram SK2075 (attached) and follow the steps below.
2. Remove power to the panel.
3. Open the panel door.
4. Remove the tie wraps bundling together the wiring harness between the two DIN rails. Be careful not to cut the wires or insulation.

(continues)

5. Remove the orange wire connecting P1 (phoenix connector) “+” on the terminal board to Valve 1 “A1+” on the relay block as in figs. 1 and 2. All other wires are to remain in their current location.

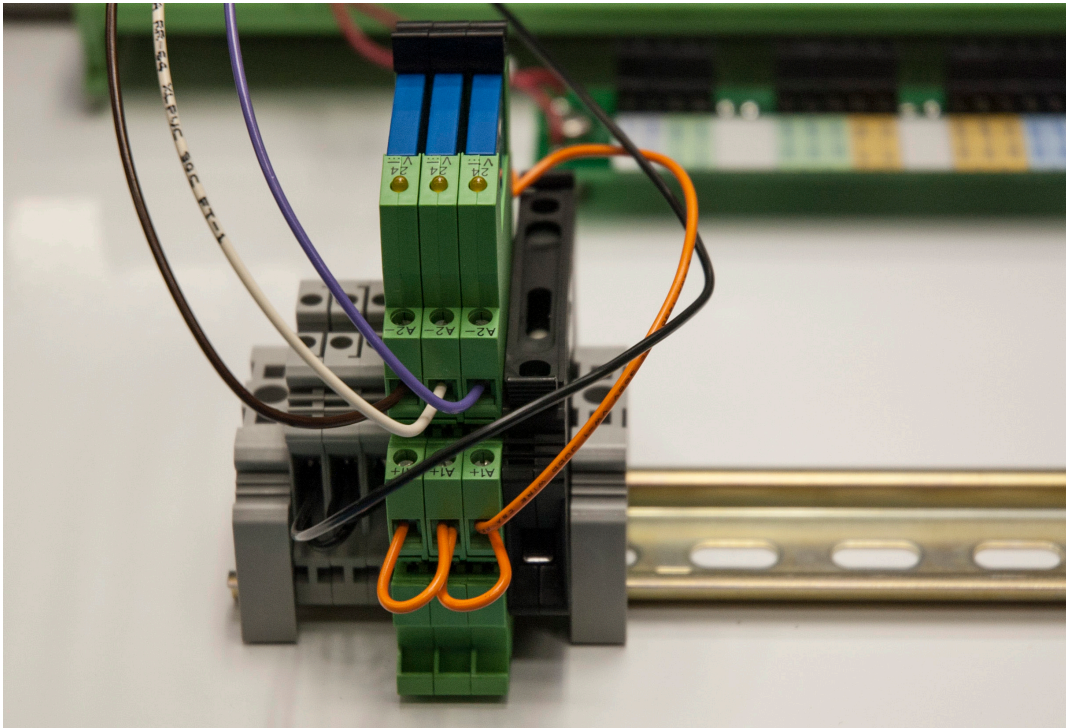


Figure 1

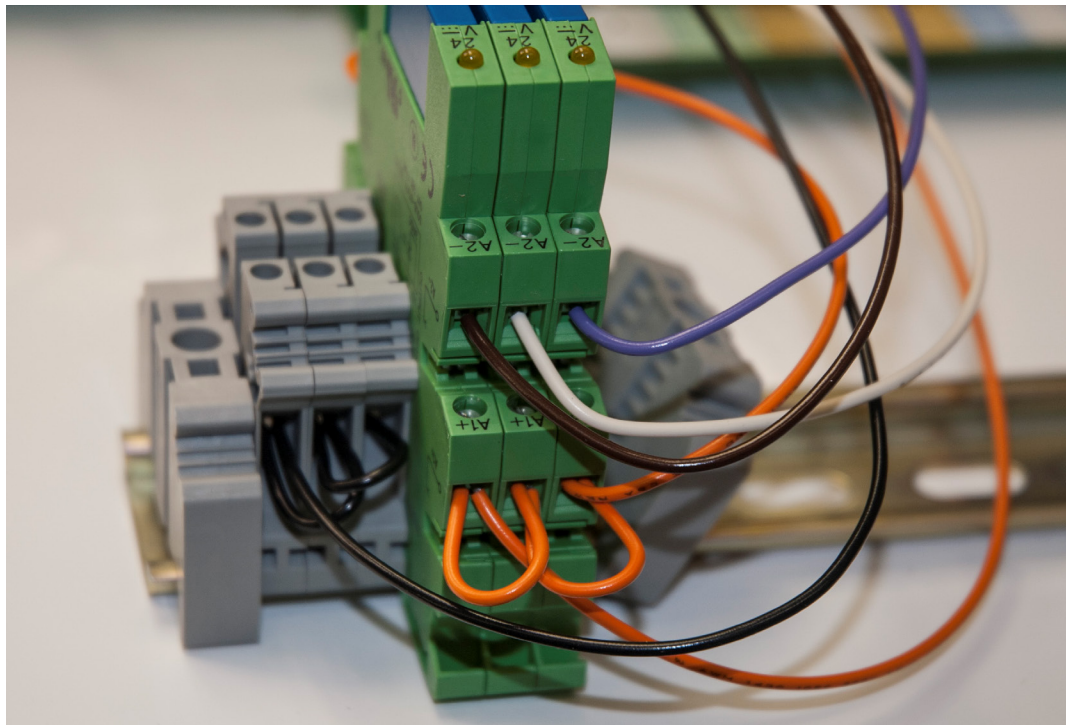


Figure 2

6. Loosen the top gray DIN rail block and slide it up. Install the fuse block as shown in Fig. 3

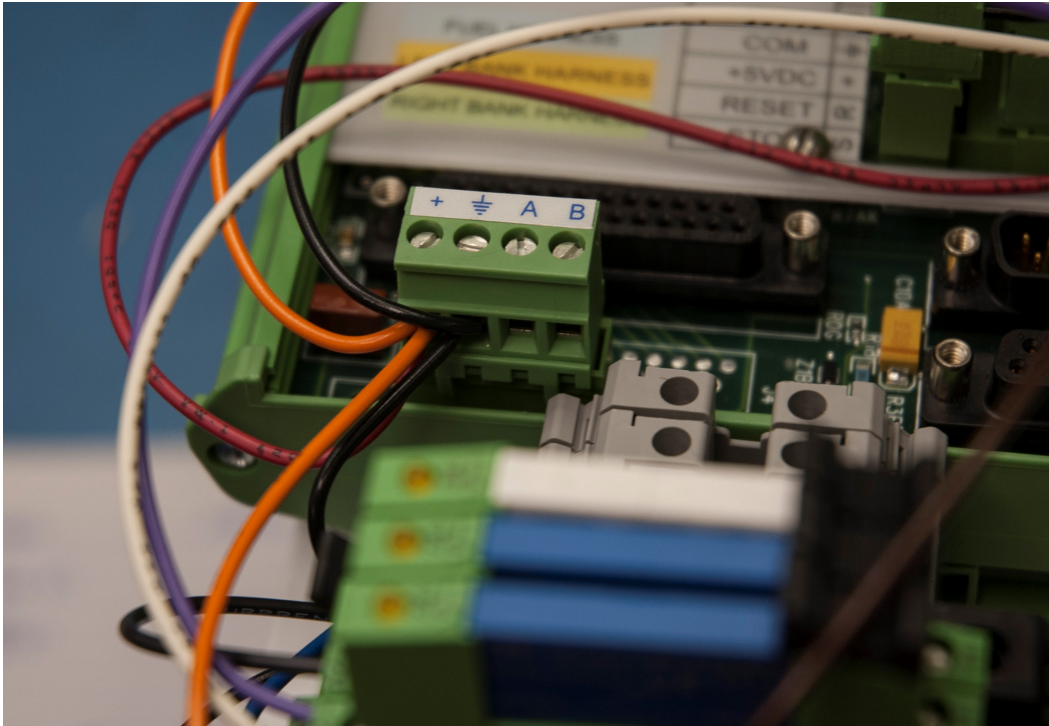


Figure 3

7. Slide the fuse block and gray din rail terminal block so that is next to the relay block.

8. Secure the gray block by tightening the center screw. See fig. 4

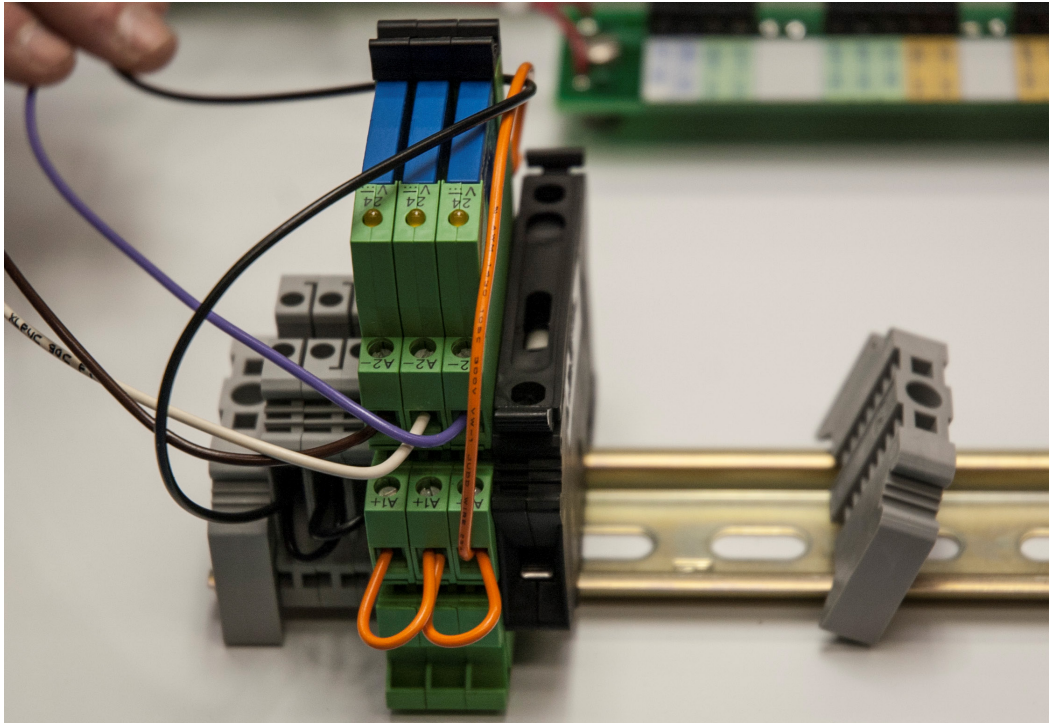


Figure 4

9. Loosen the screw on Valve 3 "A1+" terminal block and insert the small orange jumper wire (3") to the terminal block as shown in fig. 5.

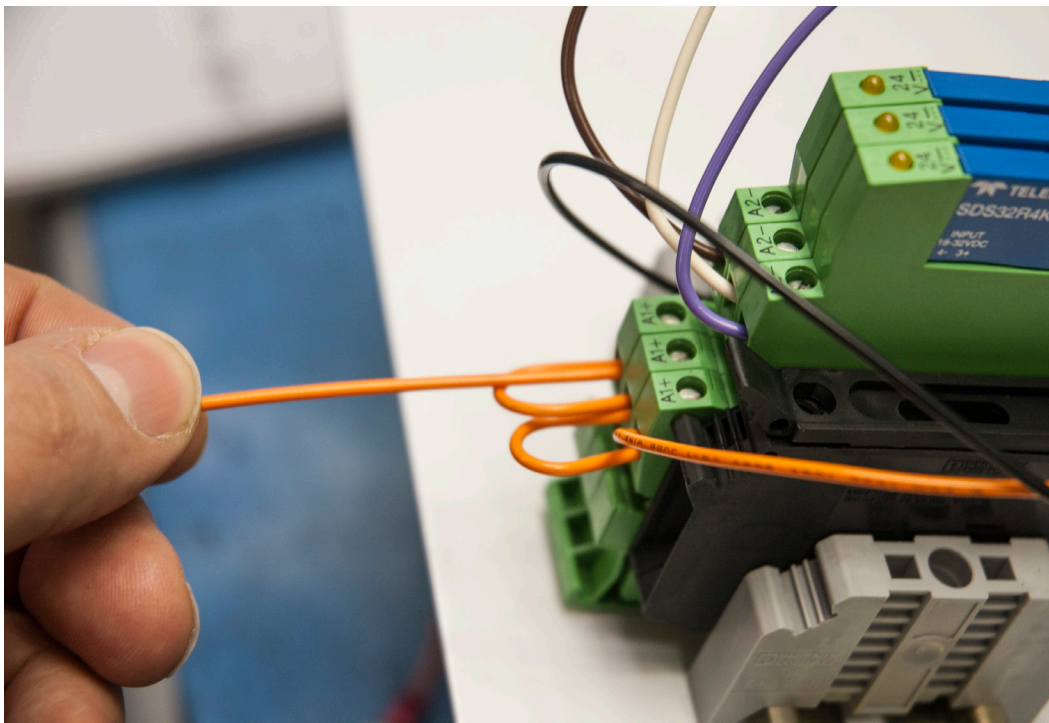


Figure 5

10. Connect the other end of the wire to the new fuse block. See fig. 6.

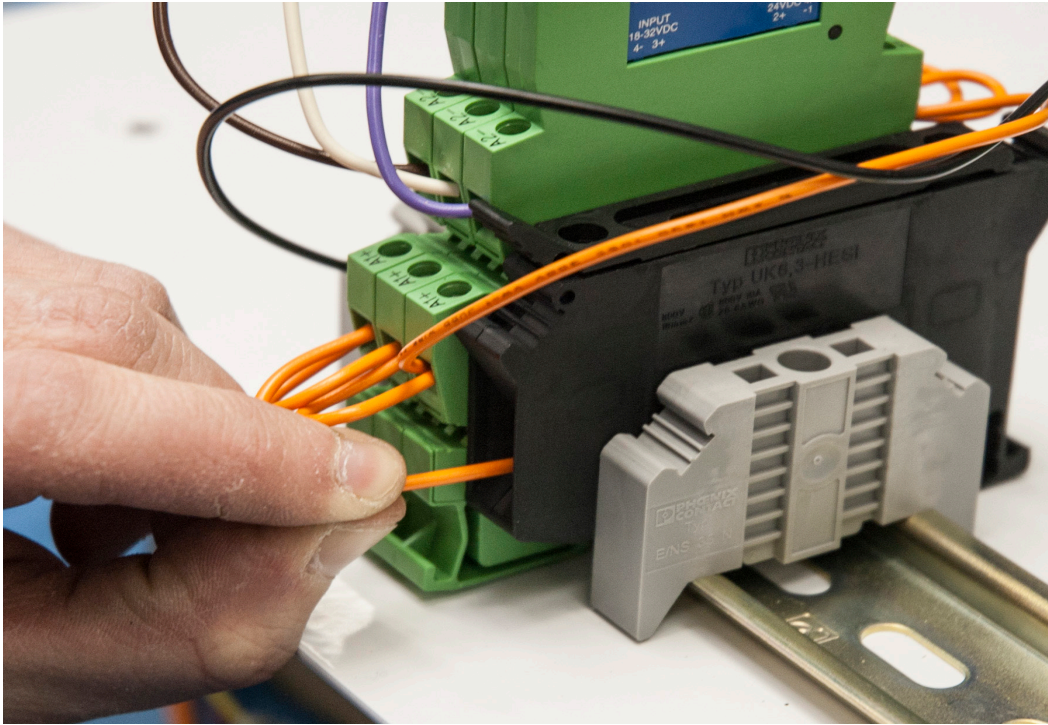


Figure 6

11. Add one end of the long orange jumper wire (19") to the right side of the old fuse block which is located on the same of the enclosure as the terminal board. See fig. 7.

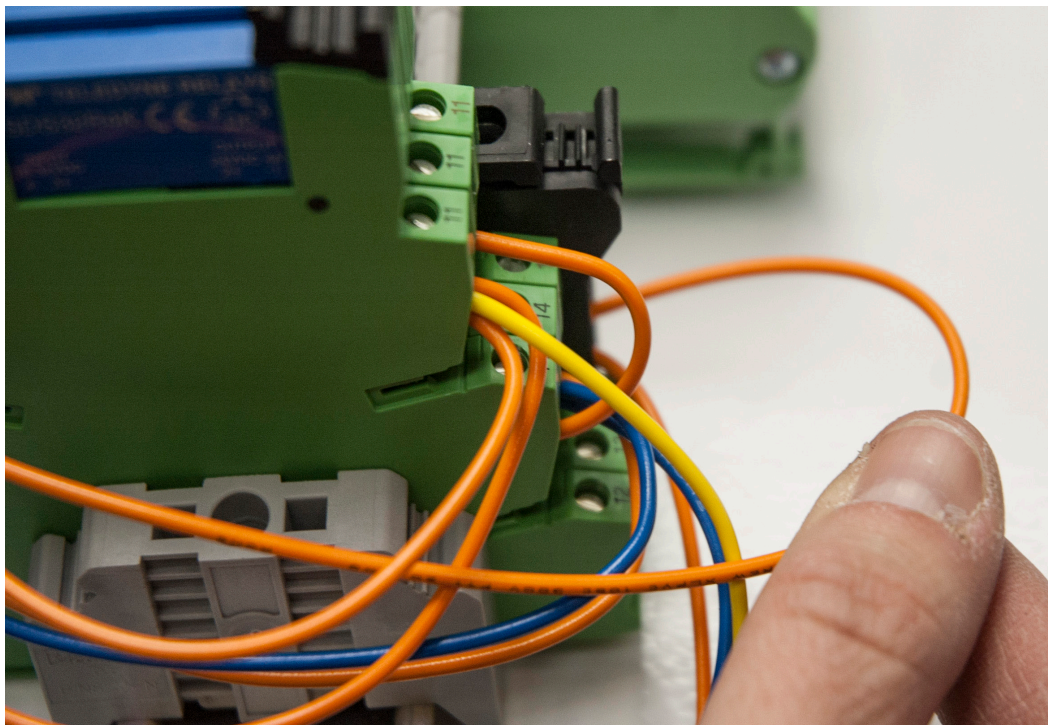


Figure 7

12. Connect the other end of the wire to the left side of the new fuse block that is being installed. See fig. 8.

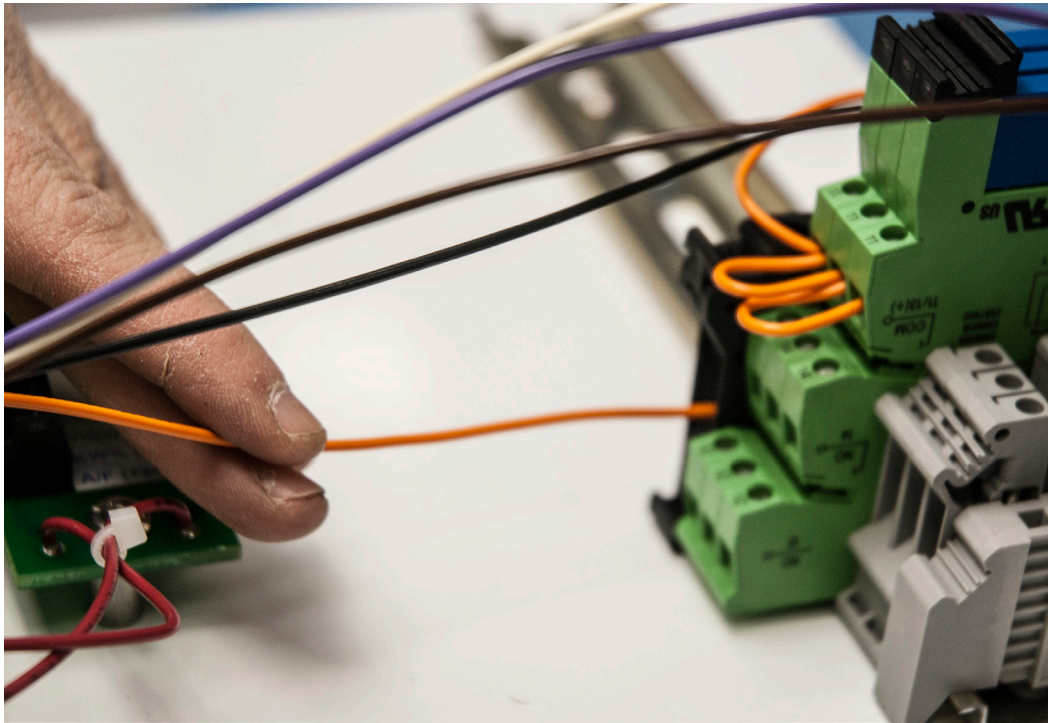


Figure 8

13. Secure wiring with the supplied tie wraps.
14. Apply 24Vdc to the panel.
15. Test for functionality of the DMV and StepCON system.